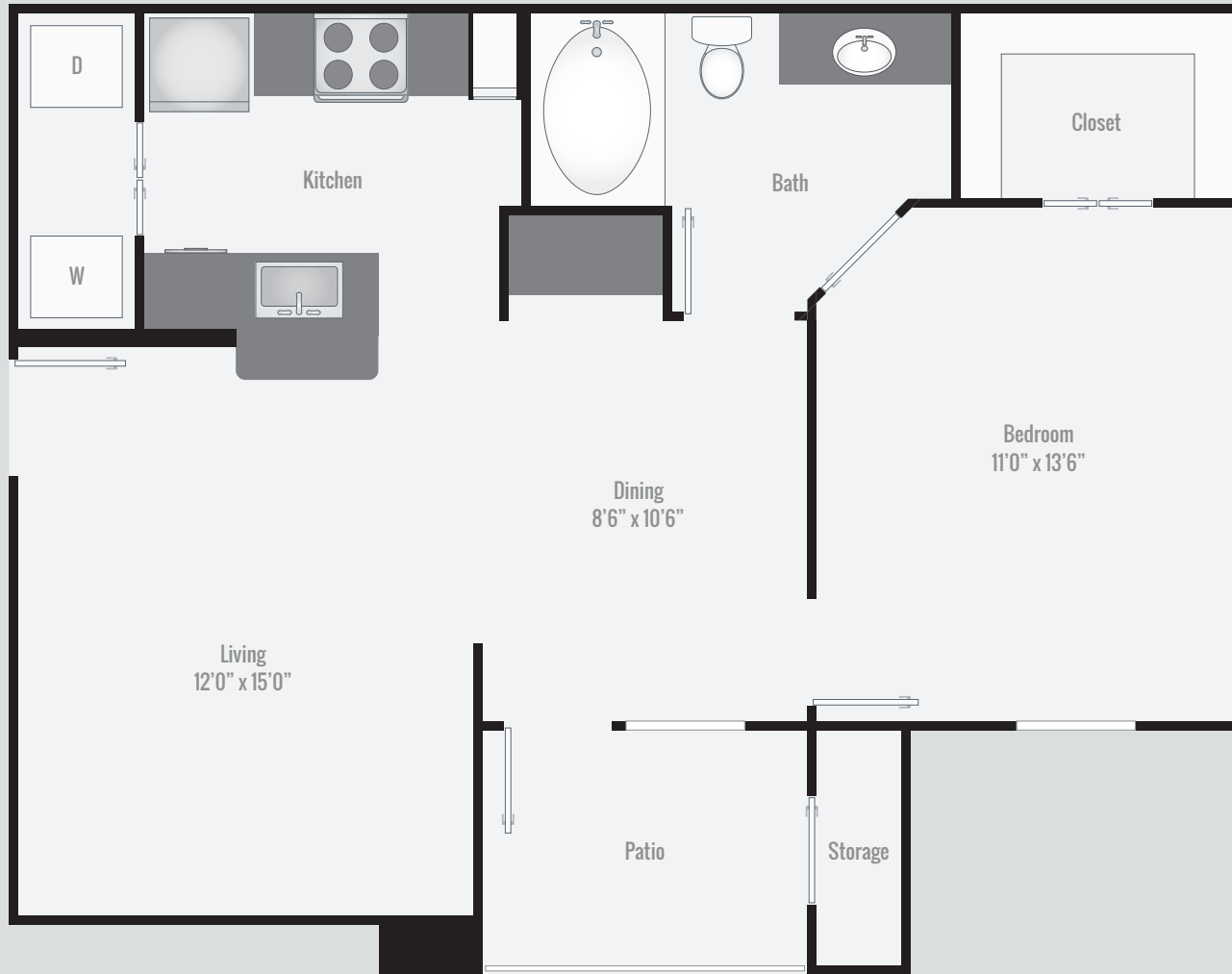


# A1

1Br \* 1Ba \* 700 SF



Oral representations cannot be relied upon as correctly stating representations of the lessor. All dimensions are approximate, floorplans and development plans are subject to change.

STONE CREEK | A PREFERRED APARTMENT | COMMUNITY<sup>SM</sup>  
★ ★ ★ ★ ★

3035 Lake Arthur Drive | Port Arthur, TX 77642 | *ph* 409.729.4100 | [StoneCreekPa.com](http://StoneCreekPa.com)

A2

1Br \* 1Ba \* 768 SF

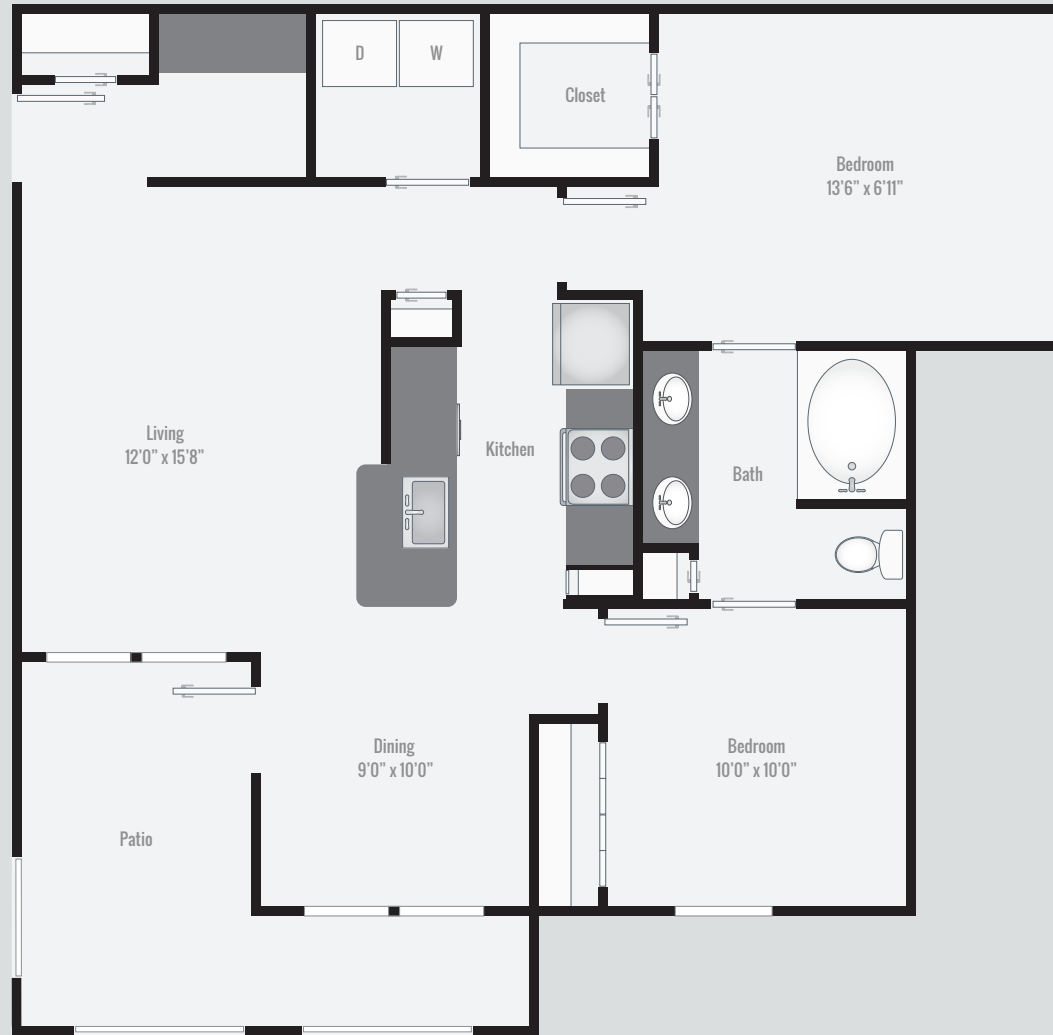


Oral representations cannot be relied upon as correctly stating representations of the lessor. All dimensions are approximate, floorplans and development plans are subject to change.

STONE CREEK | A PREFERRED APARTMENT | COMMUNITY<sup>SM</sup>  
★ ★ ★ ★ ★

# B1

2Br \* 2Ba \* 923 SF

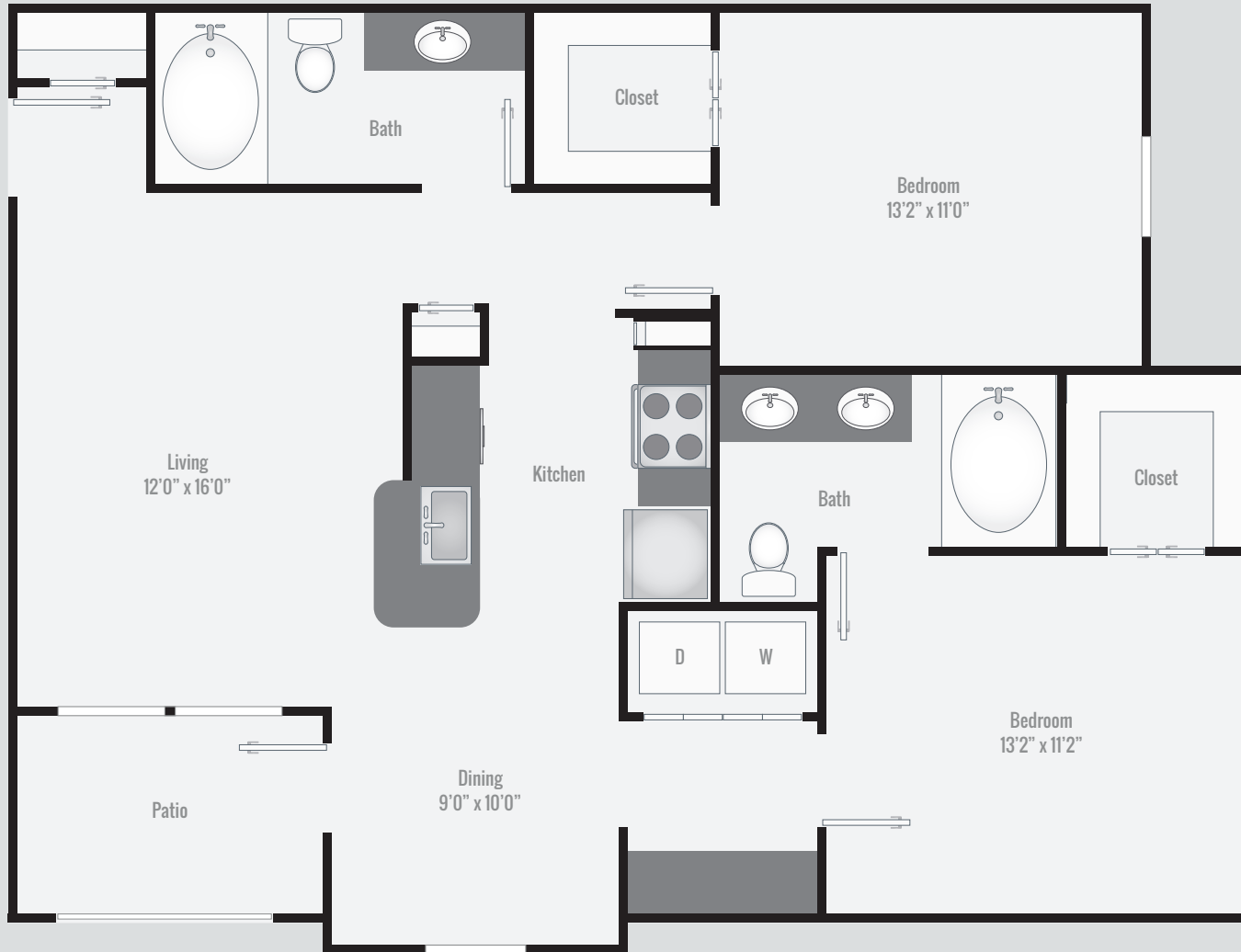


Oral representations cannot be relied upon as correctly stating representations of the lessor. All dimensions are approximate, floorplans and development plans are subject to change.

STONE CREEK | A PREFERRED APARTMENT | COMMUNITY<sup>SM</sup>  
★ ★ ★ ★ ★

# B2

2Br \* 2Ba \* 1,037 SF



Oral representations cannot be relied upon as correctly stating representations of the lessor. All dimensions are approximate, floorplans and development plans are subject to change.

STONE CREEK | A PREFERRED APARTMENT | **COMMUNITY**<sup>SM</sup>  
★ ★ ★ ★ ★

3035 Lake Arthur Drive | Port Arthur, TX 77642 | *ph* 409.729.4100 | [StoneCreekPa.com](http://StoneCreekPa.com)

# B3

2Br \* 2Ba \* 1,103 SF



Oral representations cannot be relied upon as correctly stating representations of the lessor. All dimensions are approximate, floorplans and development plans are subject to change.

STONE CREEK | A PREFERRED APARTMENT | COMMUNITY<sup>SM</sup>  
★ ★ ★ ★ ★

3035 Lake Arthur Drive | Port Arthur, TX 77642 | *ph* 409.729.4100 | StoneCreekPa.com